

# PublicAI Inc

Global Multimodal AI Training Data Service



# The Global Contributor Network Powering AI-Ready Data

| PublicAI = Scalable Data Services + Global Workforce + High-Accuracy QA

Multimodal support

Images / Video / Audio / Text / RLHF

1M+ global data contributors

SE Asia, Africa, LatAm, and North America

50% lower cost

Up to 50% lower cost with guaranteed small-batch pilots

Client Trust

Incubated by the Future Intelligent Networking Research Institute  
Contributed data to Google / Adobe / Luma.ai.

## | Highlights

95% Acceptance Rate

20% Faster

50% Less Cost

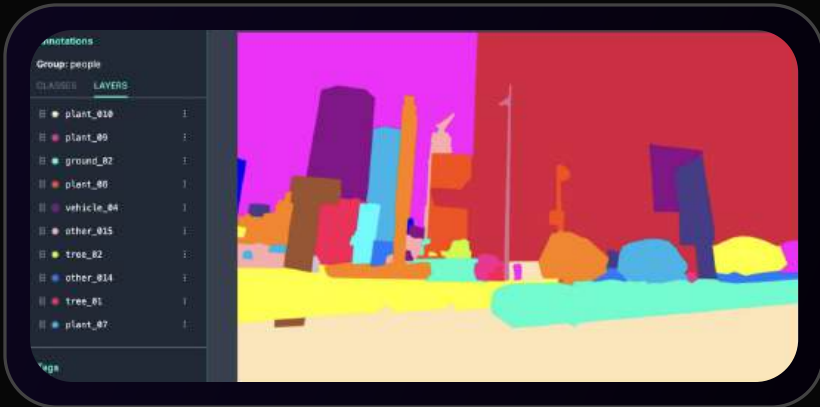
99% Industry Coverage

# Product Stack — Tools Built for All Modalities



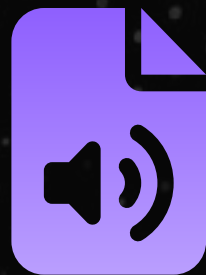
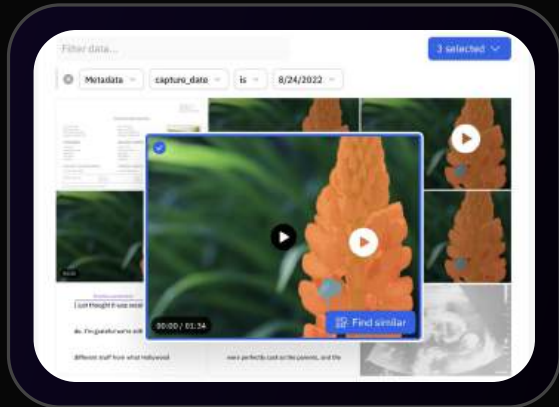
## Image Annotation Tools

- 3D Point Cloud
- Intelligent Annotation
- Semantic Segmentation
- Automatic Annotation



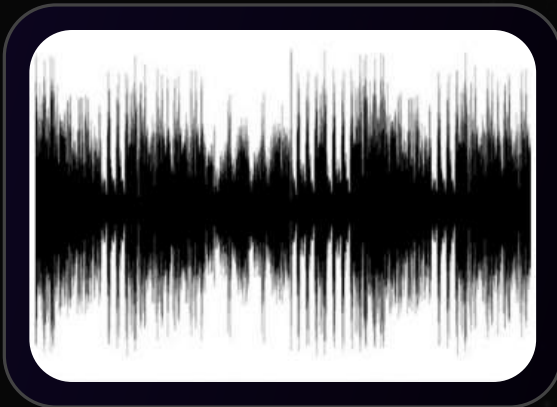
## Video Annotation Tools

- Video Tracking
- Automatic Annotation
- Cross-border Tracking
- Reid Annotation



## Audio Annotation Tools

- ASR
- TTS



## Text Annotation Tools

- OCR
- Entity Extraction
- SFT
- RLHF





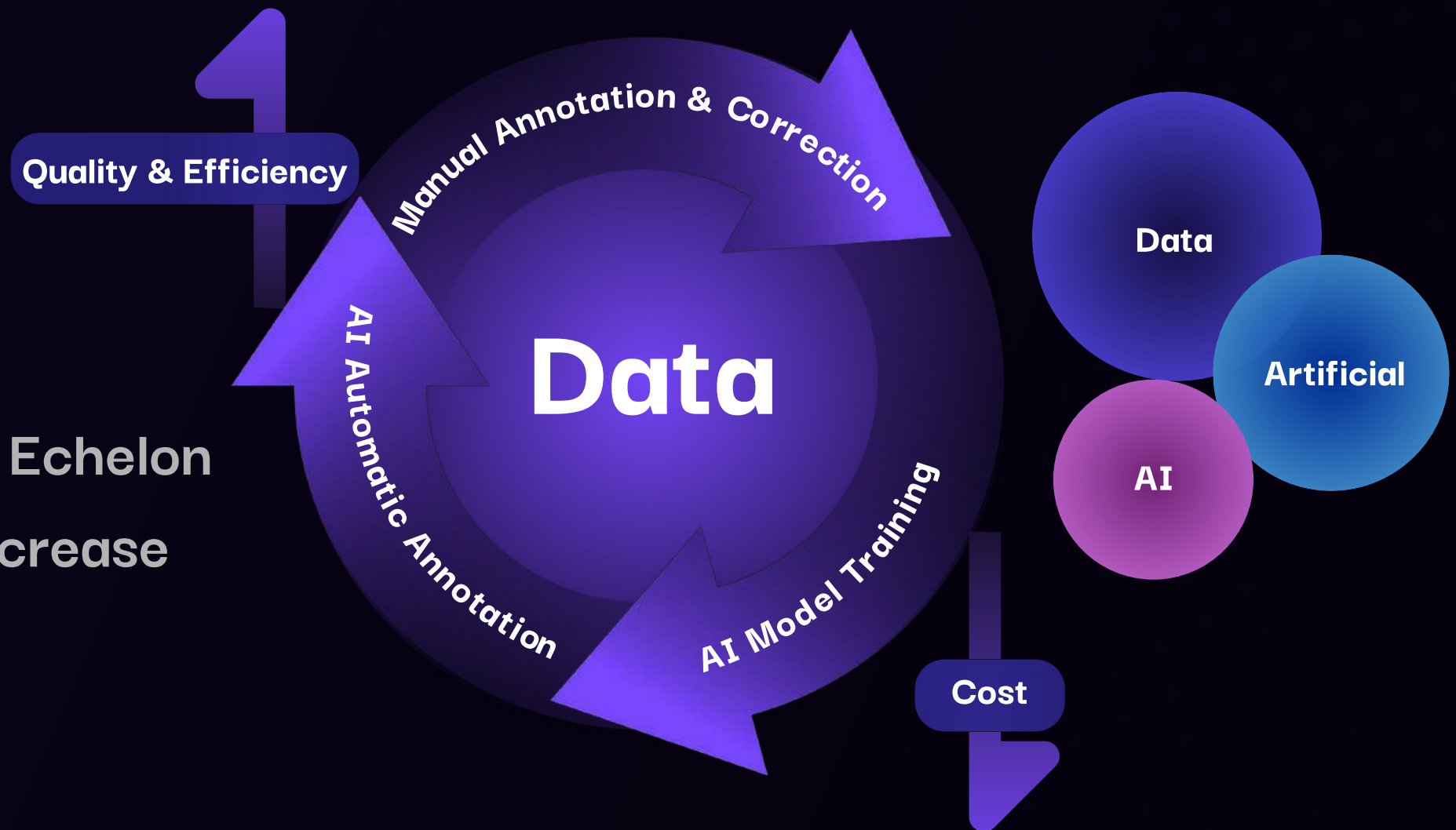
# Feature 1

## Human-AI Powered Data Flywheel

### PublicAI employs:

AI Power Pre-annotation + Talent Echelon

Cost Reduction and Efficiency Increase



## Feature 2

### Global Labor Force Resources

- We have long-term partnerships in Western China, Southeast Asia, and other third-world regions such as Asia, Africa, and Latin America.

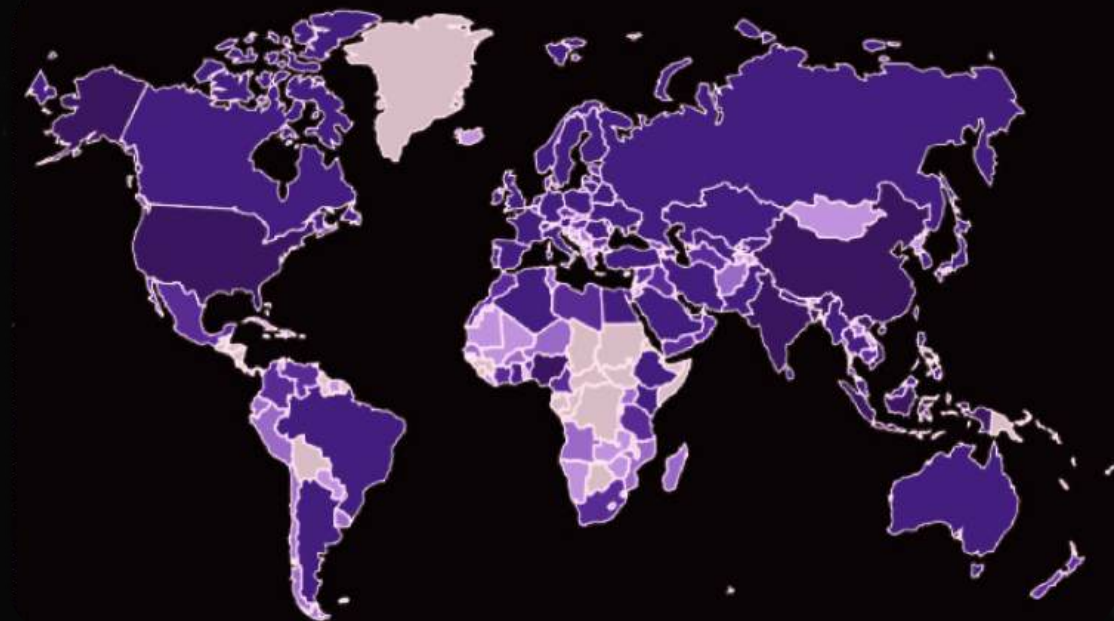
Providing low-cost, high-efficiency data annotation labor (costs significantly lower than local annotators).

10



**Data workers 1M+**

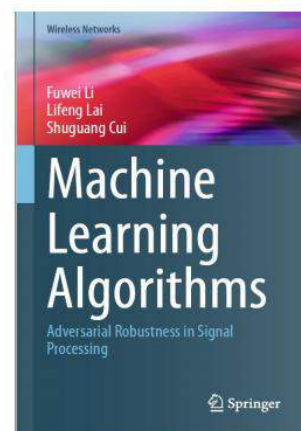
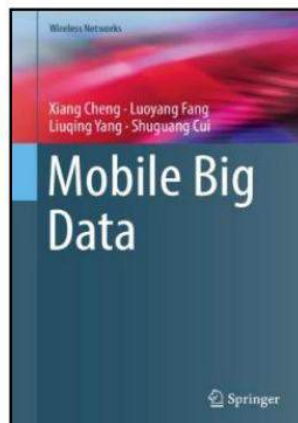
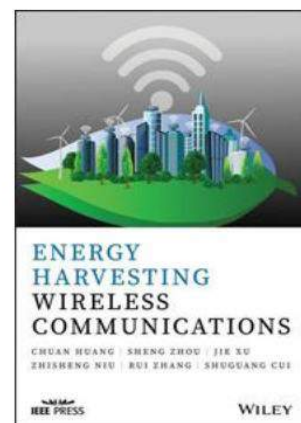
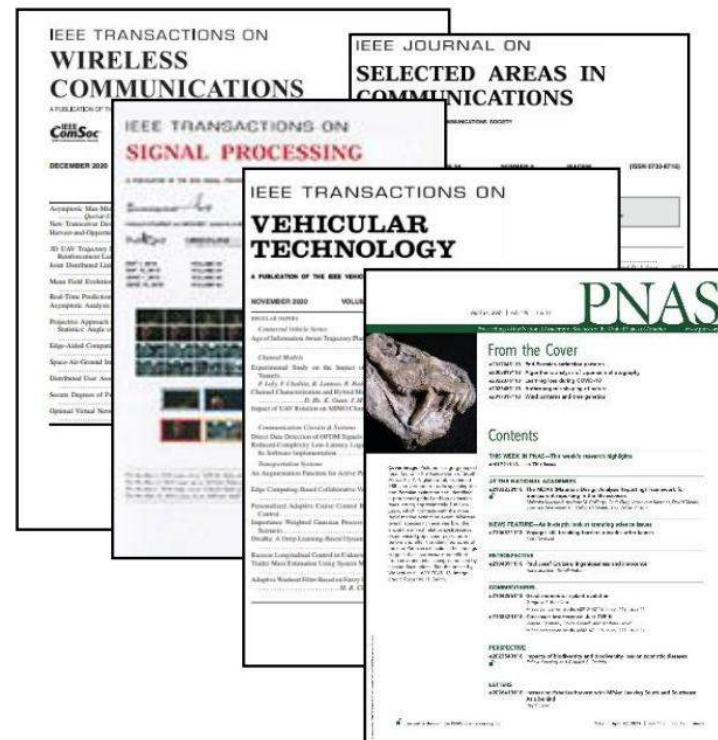
India	38.7K	Pakistan	28.9K
Indonesia	22.1K	United States	19.2K
Philippines	19.1K	Vietnam	17K





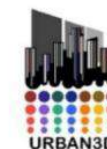
# Feature 3

## Our Team AI Background



**316** Research Papers in  
AI Top Conferences and Journals.  
**3** Books in AI Field.

**1<sup>st</sup> of CASP 15 (AlphaFold is 1<sup>st</sup> of CASP 16)**  
**2<sup>nd</sup> of Urban3D in ICCV2021 for Point Cloud Segmentation**



Urban3D: First Challenge on Large-Scale Point Cloud Analysis  
for Urban Scenes Understanding  
The International Conference on Computer Vision (ICCV), October 16, 2021

*presents*  
**2<sup>nd</sup> Place Award**  
*in*

ICCV 2021 Challenge on Urban Scenes Understanding

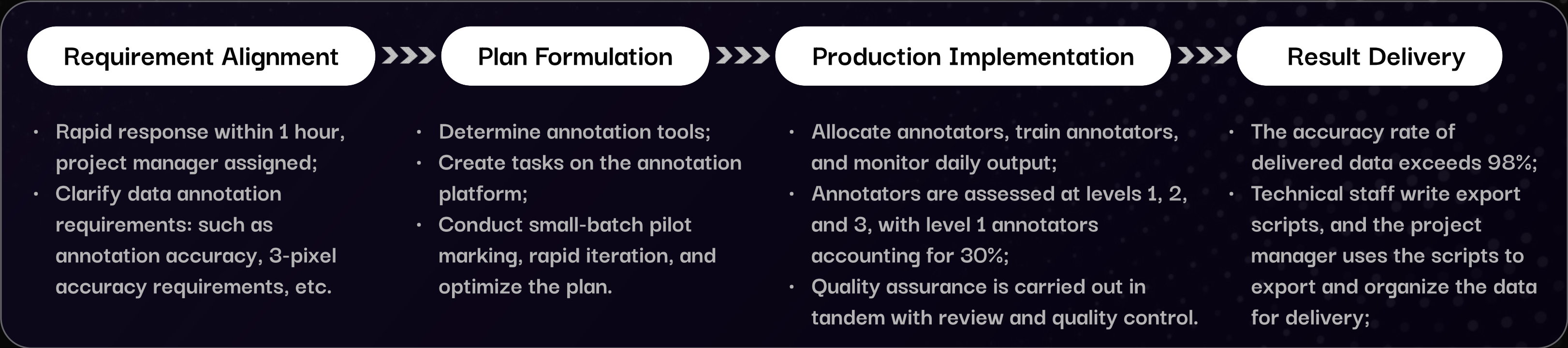
*to the Authors*

X. Yan<sup>1</sup>, Z. Li<sup>1</sup>, C. Zheng<sup>1</sup>, H. Zhang<sup>1</sup>, J. Gao<sup>2</sup>  
W. Zhou<sup>1</sup>, Y. Liao<sup>1</sup>, Z. Yuan<sup>1</sup>, S. Wang<sup>3</sup>, S. Cui<sup>1</sup>

The Chinese University of Hong Kong, Shenzhen<sup>1</sup>,  
Shanghai University<sup>2</sup>, Southern University of Science and Technology<sup>3</sup>.



# Business Onboarding Pipeline



## Voting System

- Allow users to vote for the best translation when multiple options are available.

## Correction Field

- Let users submit improved versions of translations.

## Rating System

- Add a 1-5 star rating for users to evaluate translation accuracy.



Thousands of annotators across countries: flexible allocation, transparent benefits;



Project manager: real-time monitoring of annotation quality, accountability;



Quality assurance: multiple reviews by quality inspectors and auditors;

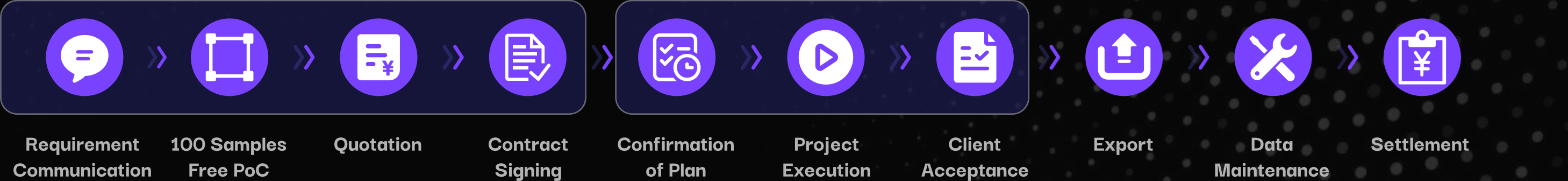


Service pricing is 50% lower than traditional models.

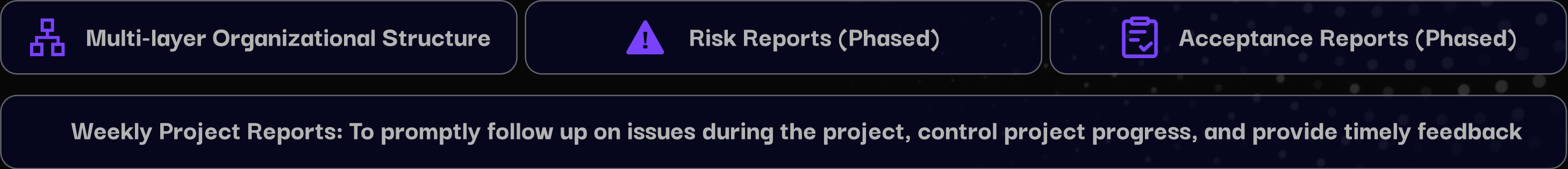


# High-Quality AI Training Data Delivery

## Process Guarantee



## Mechanism Guarantee



## Platform Guarantee



Acceptance Rate 95%



# Showcases

# Case 1:

## Autonomous Driving 3D Point Cloud Annotation

### Requirements

### 3D Point Cloud Annotation

#### Core Pain Points

- The cost of recruiting full-time annotators and using traditional tools for autonomous driving 3D point cloud annotation is high, and the cycle is long.
- There is a high demand for annotation accuracy.

#### PublicAI Solutions

- The instance semantic segmentation data annotation speed based on the human-computer annotation engine reaches 10,000 frames per month.
- Customers have given high praise for our 3D point cloud segmentation annotation.

#### Feedback on Results

- Compared to internal staff annotation, costs are reduced by 50%.
- High annotation quality and fast delivery.





# Case 2:

## Adobe & LUMA AI: MVImgNet, MVHumanNet

### Requirements

### GenAI Point Cloud 3D Dataset Collection

### Clients



- A large-scale multiview image dataset covering 3D object recognition and reconstruction. It provides synchronized views of thousands of objects from different angles, enabling robust training for tasks like view-invariant classification and 3D generation.
- <https://gaplabor.cuhk.edu.cn/projects/MVImgNet/>



- A high-quality multiview human dataset featuring diverse poses and clothing under controlled lighting. It's designed for human mesh recovery, pose estimation, and neural rendering, with precise camera calibration and dense annotations.
- <https://x-zhangyang.github.io/MVHumanNet/>



# Case 3:

## Vertebral Pathology Detection and Analysis

### Requirements

105 key points for lateral positioning

### Core Pain Points

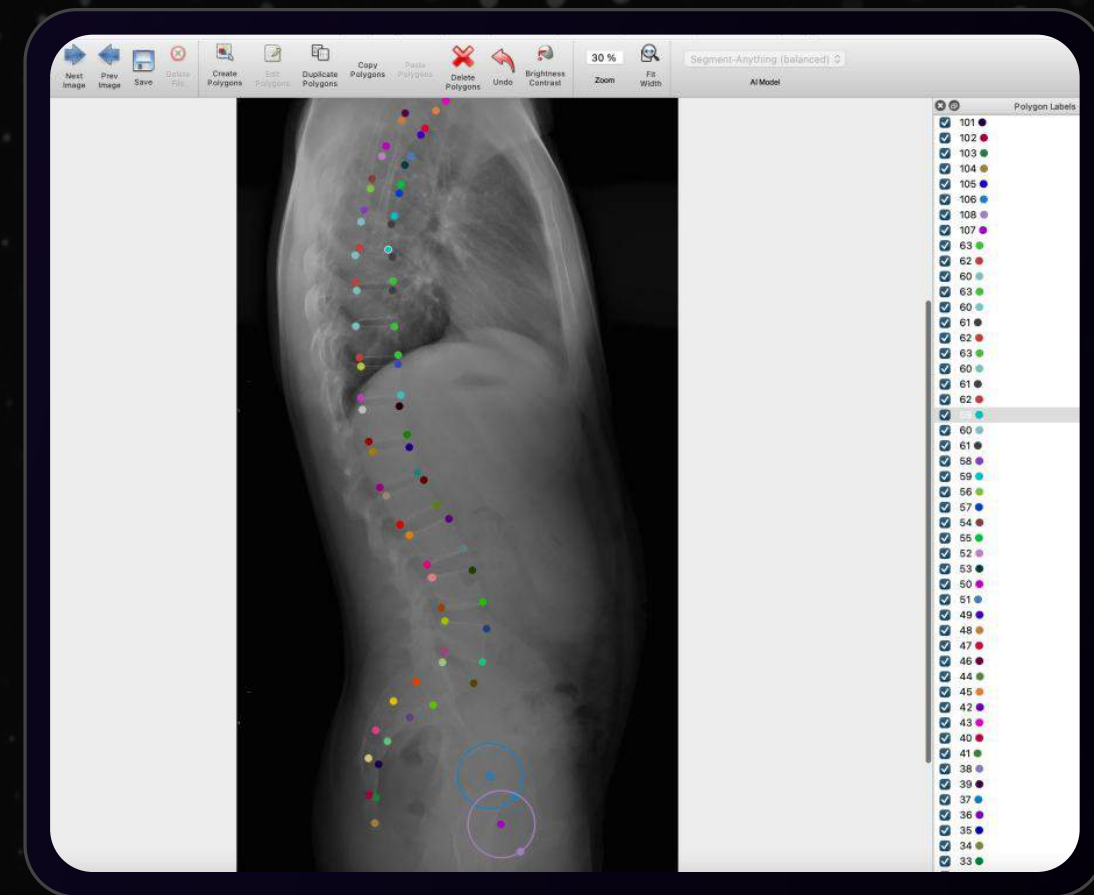
- Marking 4 key positions of the lateral vertebrae requires precision. In every case, there are more than 10 positions of the vertebrae that are completely unclear and need to be marked by guessing according to specified standards, which is very demanding.

### PublicAI Solutions

- Completed workload assessment and related training materials within 3 days, and the quotation was approved by the customer at once.
- Mobilized multinational labor union workforce to quickly allocate annotators, quality checkers, and auditors, achieving a labeling speed of 1K per day.
- Quantity: 9.8K cases

### Feedback on Results

- Cost reduced by 40% compared to internal staff annotation.
- High annotation quality and fast delivery.





# Case 4: Swimming Pool Object Detection and Annotation

## Requirements

## Swimming pool human posture detection

### Core Pain Points

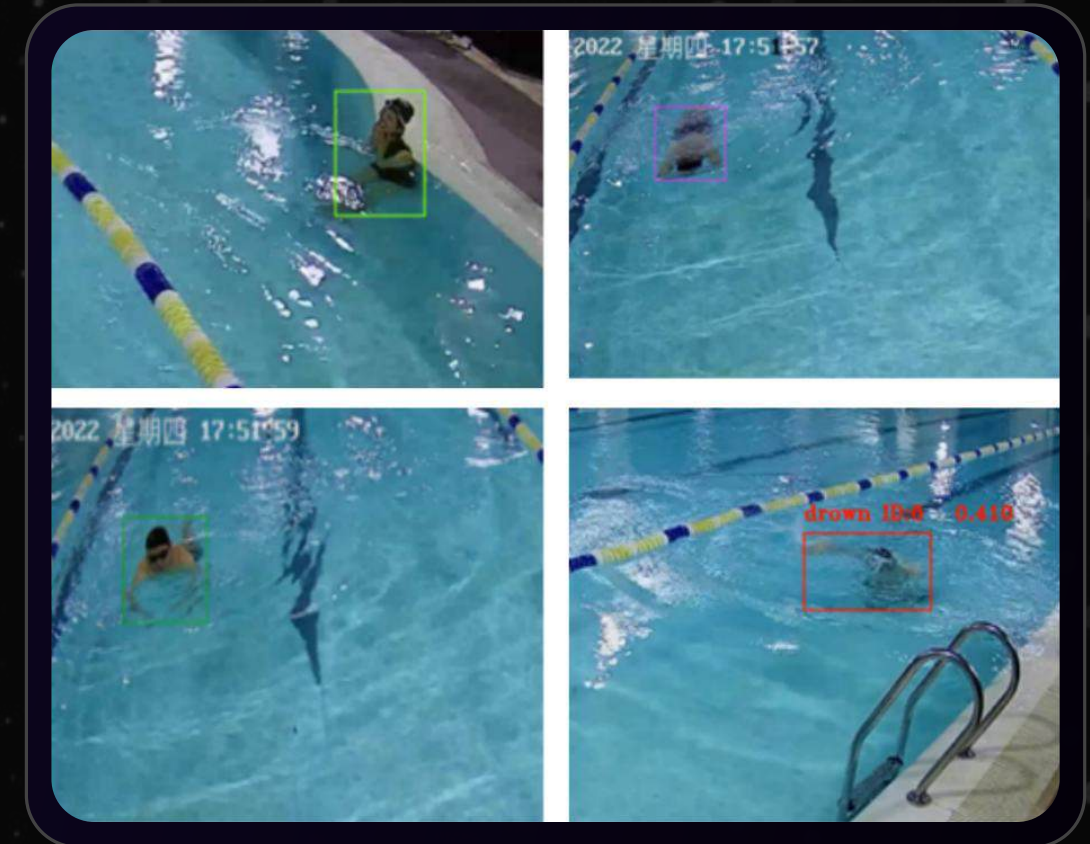
- Large volume of annotations, over 50,000 images, with 5 to 10 bounding box labels per image, required to be completed within two weeks.

### PublicAI Solutions

- Rapid response to customer needs within one day, and completion of contract signing;
- Adoption of AI pre-annotation bounding boxes, mobilization of multinational labor union workforce, and quick allocation of annotators, quality checkers, and auditors, achieving a labeling speed of 1,000 per day.

### Feedback on Results

- Saved 60% of manual labor time costs;
- High annotation quality and fast delivery.



# Case 5:

## Chicken Farm Chick Behavior Detection

### Requirements

Instance segmentation of chicks on the chicken farm

### Core Pain Points

- Large number of labels, with 7 labels, and about 1,000 tags per chick image, with a customer requirement to deliver 500 images per week.

### PublicAI Solutions

- Rapidly responded to the customer's needs within 3 days and completed the contract signing;
- Employed AI pre-annotation for chicks, mobilized multinational labor union workforce, and quickly allocated annotators, quality checkers, and auditors to achieve a labeling speed of 100 images per day.

### Feedback on Results

- Saved 60% of manual labor time costs;
- High annotation quality and fast delivery.





# Case 6:

## Vertebral Medical Detection and Analysis

### Requirements

Vertebral endplate and pedicle identification

### Core Pain Points

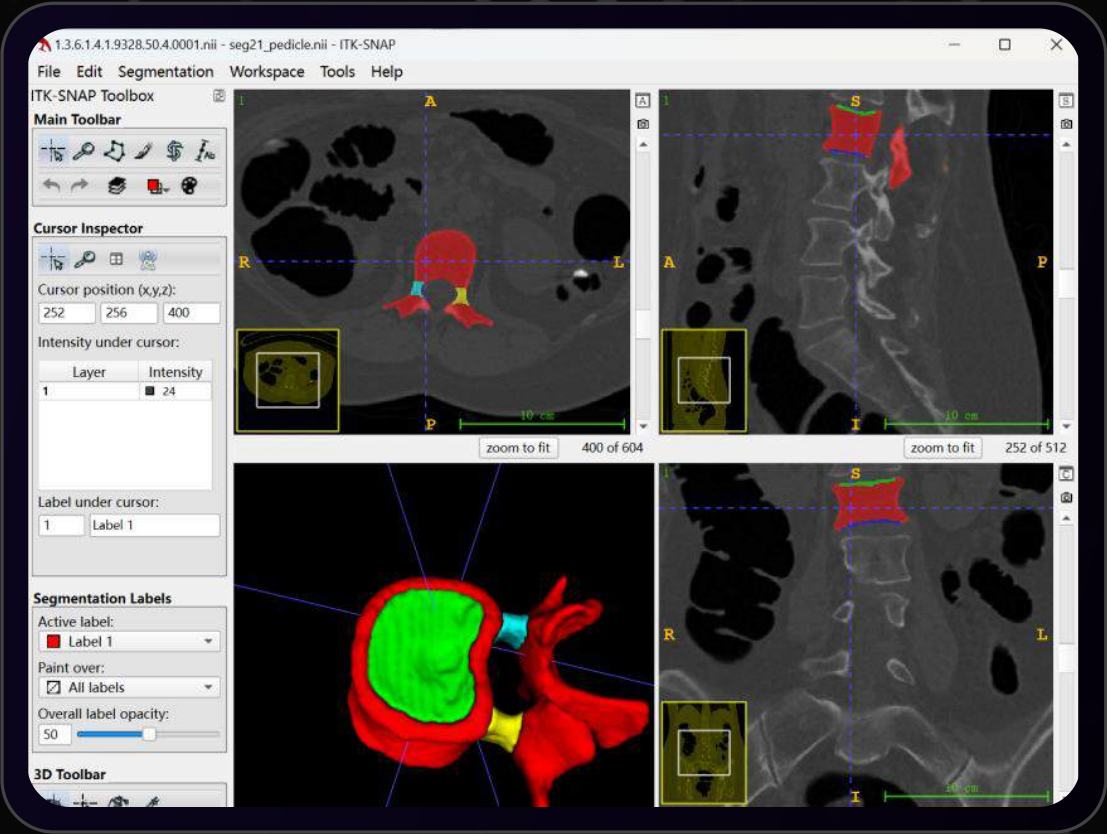
- Strong medical expertise is required, high data accuracy is demanded, with high training costs and a large workload (superior and inferior endplates, left and right pedicles in 3D sections). Each type of marking requires switching through more than 30 different views to be completed.

### PublicAI Solutions

- Collaborated with professional medical personnel for annotation standards setting and revisions, completing specialized annotation training.
- Utilized AI technology for automated annotation, reducing the workload of annotators and increasing work efficiency.
- Quantity: 10,000+                      Quotation: 90 yuan per section

### Feedback on Results

- With the assistance of AI annotation, costs were reduced by 30% compared to internal staff annotation.
- High annotation quality and fast delivery.



# Let's Start a Pilot

**Ready to test high-quality, on-demand data?**

Email: [sales@publicai.io](mailto:sales@publicai.io)

Website: <https://publicai.io>

